

INSPIRE: THE NEW FRONTIER IN SLEEP APNEA



Ike. Ekekwe, MD

Attending Physician:

Pulmonary, Critical Care &
sleep medicine

WHAT IS SLEEP APNEA?

<https://youtu.be/hj-kluabH8l>

WHAT IS THE INSPIRE DEVICE ?

- UPPER AIRWAY STIMULATION DEVICE
- AN IMPLANTED DEVICE
- CONSIST OF 3 PARTS :
 - - BATTERY POWERED PACE MAKER; SENSOR & CUFF



INSPIRE DEVICE

- [HTTPS://YOUTU.BE/CSG4M4OUT3U](https://youtu.be/CSG4M4OUT3U)

CLINICAL INDICATION:

- TO TREAT OBSTRUCTIVE SLEEP APNEA IN THE RANGE OF MODERATE TO SEVERE.

CRITERIA FOR INSPIRE:

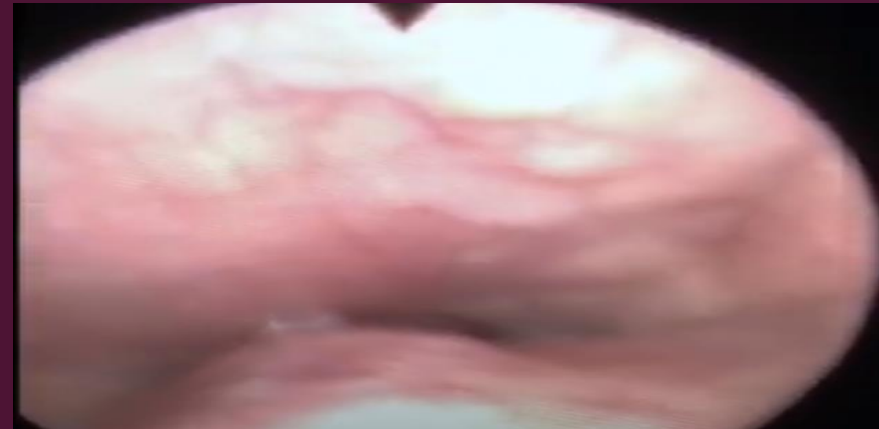
- AGE: > 18 YRS
- MODERATE TO SEVERE OSA (AHI 15 - 65 EVENTS PER HOUR)
- < 25% OF CENTRALS IN THE SLEEP STUDY (WITHIN THE PAST 2 YRS)
- BMI < 35KG/M/SQ.
- NO CONCENTRIC COLLAPSE OF AIRWAY ON DISE TEST

PATIENT SELECTION:

-
- BASED ENTIRELY ON MEETING THE CRITERIA

FIRST STEP DISE TEST:

• DRUG INDUCED SLEEP ENDOSCOPY TEST:



IMPLANTATION/SURGERY PROCESS:

- DAY SURGERY.
- ~ 2HRS DOWNTIME
- INVOLVES GENERALIZED ANESTHESIA

SURGERY COST:

- ~ \$30,000 TO \$40,000. (MOSTLY COVERED BY MEDICAL INSURANCE)
- ~ OUT OF POCKET COST ~ \$1,000 TO \$2,000.
- REPLACEMENT OF BATTERY PROCEDURE (9-11 YRS) ~ \$ 17,000.

POST SURGERY:

- RECOVERY PHASE: 24-48HRS
- THE DEVICE IS ACTIVATED 3-4 WEEKS POST SURGERY
- SURGICAL WOUND

COMPLICATIONS OF SURGERY:

- RELATED TO ANESTHESIA
- BLEEDING
- INFECTION
- SPEECH SLURRING
- PNEUMOTHORAX

BILLING CODE:

- BILLED AS AN INITIAL PATIENT CPT VISIT CODE: 99205
- ELECTRONIC ANALAYSIS OF NEURO STIMULATOR IMPLANT CPT CODE:
95976

CLINICAL EXPECTATION/EXPERIENCE:

- APNEA CONTROL
- SNORING CONTROL

SOLO THERAPY VS. COMBINATION THERAPY:

- CAN YOU COMBINE INSPIRE WITH OTHER THERAPIES ?
-
- #1 ORAL APPLIANCE
- #2 CPAP



SLEEP APNEA AND TRAUMATIC BRAIN DISORDER/INJURY

QUESTIONS

